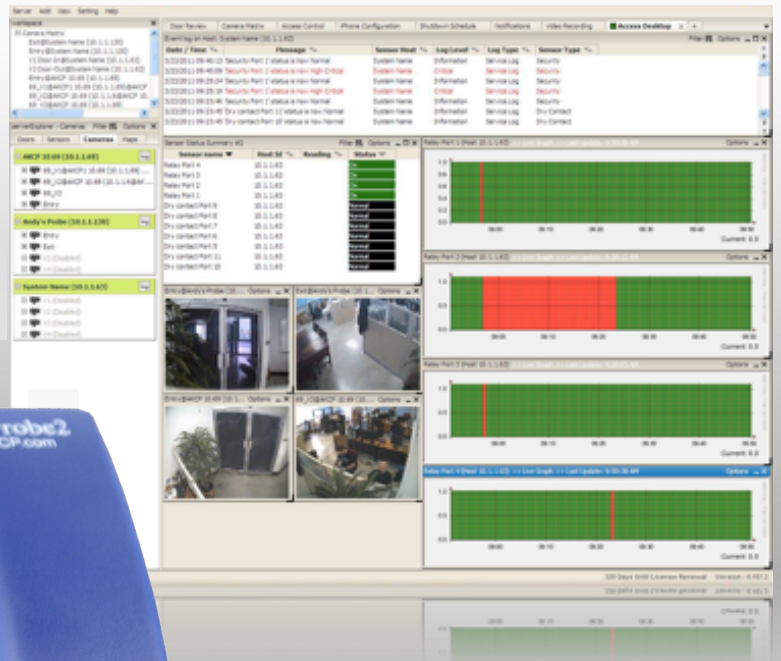


# sensorProbe2



## sensorProbe2

Simple, Accurate and Rugged, sensorProbe2 is a low cost SNMP enabled and Web-Based Environmental Monitoring Device.

Based on years of Industry experience it's ready to run right out of the box, simply assign the IP address and connect to the embedded web server.

## Introducing the sensorProbe2

sensorProbe2 has been field-proven with versatile measurement options. It can be configured to prevent specific kinds of exposure to humidity, water leakage, gas, airflow and low / high temperature, etc. It does support other sensors which can monitor voltage drop, security, analog and dry contacts. It is customizable to any other sensors like Motion, Gas and Sound Sensors.



sensorProbe2 Monitoring System

A wide range of our intelligent sensors are supported. Plug any sensor into the sensorProbe2 and our autosense feature will recognize the type and automatically configure it. The sensorProbe2 monitors your equipment's environmental variations, and notifies you through "Email or SNMP Alerts in your Network Management system" in advance and prevents any disaster. The user-friendly web interface allows you to monitor and control the sensorProbe2 from anywhere remotely. It also provides you the graphical representation of environmental conditions.

sensorProbe2 has been tightly integrated with Network Management Systems like HP Openview, CA TNG Unicenter, IBM Tivoli and WhatsUp Gold.

### sensorProbe2's Main Features

The sensorProbe2 is designed to run for years non-stop. Our simple port system system allows you to setup the sensorProbe2 within minutes.

- Includes Temperature Sensor, SNMP MIB and Integrated Software
- Supports all Major Communications Protocols
- Embedded Web Server
- Supports up to 2 Intelligent Sensors
- Supports up to 10 Dry Contact Inputs  
*\*Use two 5DCS sensors and the DCUPGSP2 Code.*
- Full SNMP v1 compliance
- Includes SNMP MIB
- Includes SNMP Utilities for setting and getting parameters
- Supports SNMP polling to allow sensor values to be collected and graphed
- Send Trap Notifications
- Send Email Notifications
- Include Sensor Description and current Sensor Values in Notifications
- User configurable Sensor Thresholds
- Use the built in "Continuous Time" feature to eliminating false alerts and notifications
- Optional PoE (Power over Ethernet) that is IEEE 802.3af compliant
- 100MB Full Duplex Ethernet port

### ► Temperature/Humidity Sensor



Up to two Temperature / Humidity sensors can be plugged into the RJ-45 jacks on the sensorProbe2. The Temperature/Humidity sensor comes with 1 foot of cable. The humidity sensor has its ownSNMP OID so that data can be collected over the network and graphed.

### ► Security Sensors



Security sensor with an ALARM/NORMAL indication in software. Connect up to two security sensors which can detect doors and windows being opened or closed. SNMP interface for alarm/normal status. SNMP traps sent when critical.

### ► Temperature Sensor



Up to two temperature sensors can be plugged into the RJ-45 jacks on the sensorProbe. The sensorProbe comes with a one foot temperature sensor. Temperature sensors (the remote type TMP00, not fixed one foot) can be extended with standard CAT5e network cable up to 1000 feet.

### ► Voltage Sensors



Voltage Monitor sensor with an ALARM/NORMAL indication in software. Up to two voltage sensors per sensorProbe2. Voltage sensors can detect the presence or the absence of line voltage.

### ► Water Sensors



The water detector sensor is an advanced microprocessor based design, capable of detecting distilled water. This water detector is designed and manufactured by AKCP.

### ► ropeWater Sensor



Up to two ropeWater sensors can be plugged into the RJ-45 jacks on the sensorProbe2. This sensor will detect the presence of water anywhere along the rope.



### ▶ 4-20 mA Converter

The 4-20 mA signal converter is used to integrate the sensorProbe2 with a 4-20 mA transmitter. 4-20 mA technology is used to communicate analog signals over long distances where electrical interference is a problem.



### ▶ AC and DC Relays

Up to two PRB00-AC or PRB00-DC sensor controlled relays can be connected to the RJ-45 sensor ports. Tied to another sensor, AC or DC equipment can be automatically controlled by the sensorProbe2.

## Industry Certifications & Network Management Systems



AKCP offers NMS Integration for leading network management systems such as:

- AdRem NetCrunch
- IBM Tivoli
- SiteScope
- Quest Software – Big Brother
- Lorient Pro
- Somis WebNM and Denika
- Castle Rock
- Logalot
- WhatsUp Gold
- HP OpenView
- MRTG
- Computer Associates Unicenter TNG

## Support and Warranty



- **1 year Limited Warranty, Optional 2 Year Warranty.**
- **Unlimited Lifetime Support.**
- **Free Firmware Updates.**
- **Full, Easy to Follow Documentation.**

## Technical Specifications

### Dimension

Size 4.5" x 2.5" x 1.25"  
Weight 0.242 pounds

### Network Interface

Standard 100MB Full Duplex  
Ethernet RJ-45 Port

### Mounting

On rack-mount, or wall hanging

### Power Requirements

Voltage 7.5 - 9 V /  $\geq 1.2$  Amp

### Status Indication

LED indication for Power  
LED for Network Connectivity  
LED for sensor online and  
Threshold status

### Output

Configurable output signals  
(0VDC/5VDC) on any of the 2  
RJ-45 sensor ports

### Power Consumption

- Typical 1.125 Watt, 0.15A

### Operating Environment

Temp : Min. -35°C - Max.80°C  
Humidity : Min. 20% - Max. 80%  
(Non-Condensing)

### Components

Manufactured using highly  
integrated, low power surface  
mount technology to ensure long  
term reliability.

### Inputs

2 RJ-45 ports for connecting  
AKCP sensors  
Up to 10 dry contact inputs

### PoE – Power Over Ethernet

SP2 PoE is IEEE 802.3af  
compliant